

Real Time Suicide Surveillance System

Rosalind Reilly, Public Health Wales



GIG
CYMRU
NHS
WALES

Iechyd Cyhoeddus
Cymru
Public Health
Wales

Introduction

- Background
- Aim & Objectives
- Collection of information
- Outputs
- Governance
- Issues
- Next steps for RTSSS

Background

- One of the ambitions in the 'Talk to me 2' suicide and self-harm prevention strategy for Wales (2015-2022) was to establish surveillance systems to improve the quality of data and intelligence to inform prevention
- The need for this became more urgent in light of the pandemic, and other parts of the UK had already been implementing these systems
- WG (Mental Health and Vulnerable Groups policy team) commissioned a national repository for (suspected) suicides within PHW
- RTSSSS established in PHW on 1st April 2022
- Part of a wider programme of work supported by WG

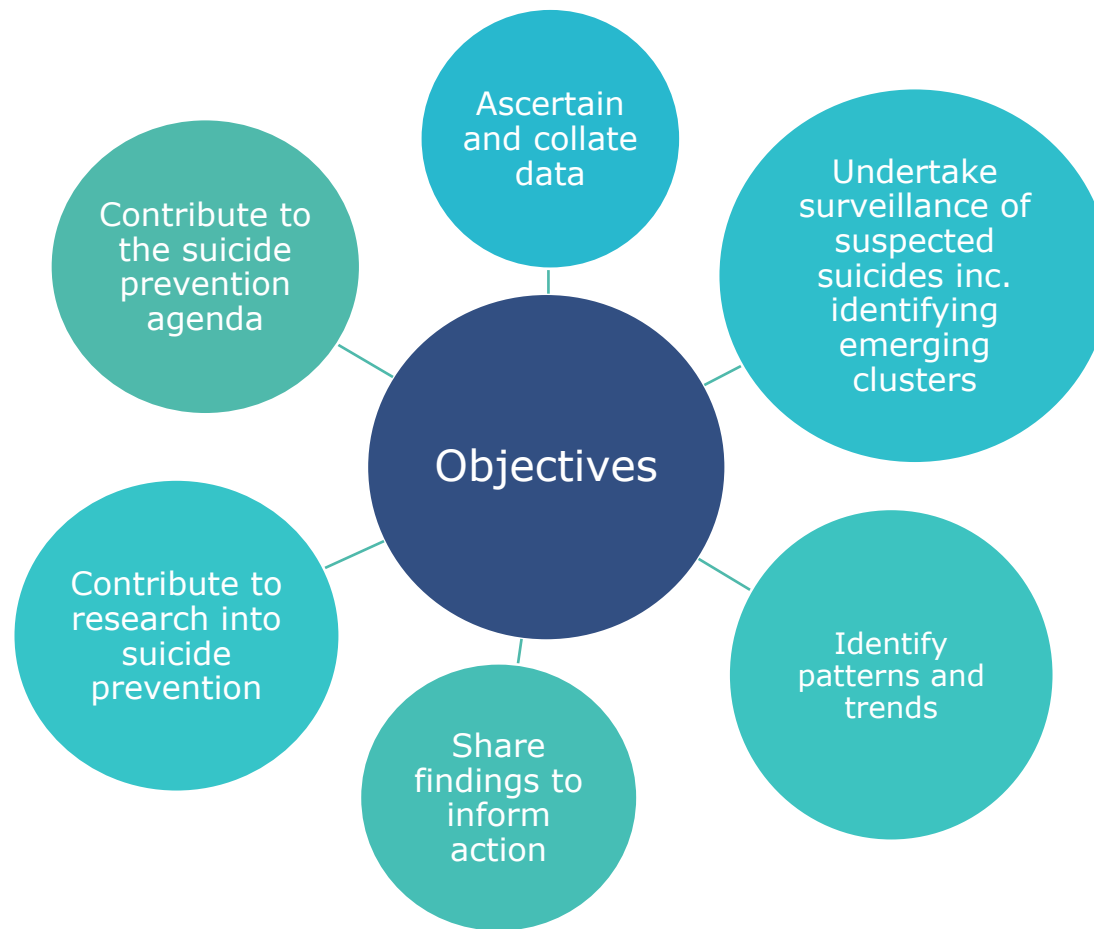
Aim (draft)

To act as a central national repository for suspected suicides in Wales and to generate the intelligence to inform suicide prevention activity across Wales. It will also be used for ongoing monitoring of the impact of the pandemic on suspected suicide deaths.

Includes:

- Suspected suicide deaths of individuals who die in Wales (Welsh residents and non-Welsh residents)
- Suspected suicide deaths of Welsh residents who die elsewhere.

Objectives (draft)



Where does the information come from?

- Four Welsh Police Forces – British Transport Police return
- National Collaborative Commissioning Unit
- Validation of information with BTP, Delivery Unit, Child Death Review Programme

- Future? – ITU, Prisons, England RTSSS, Welsh Clinical Portal

What information do we collect?

- Basic demographic information e.g. age, ethnicity
- Other demographic information e.g. occupation, marital status
- Information specific to the event e.g. location, mode of death
- Other known information e.g. whether the person was known to mental health services or police

Outputs

- Monthly surveillance output discussed at operational group
- Quarterly surveillance reports sent to small number of partners
- Annual surveillance reports published on PHW website
- Escalation and dissemination of information regarding possible clusters/contagion to local response groups
- Other published reports which describe findings on patterns and trends of all suspected suicides deaths in Wales
- Rapid reviews
- Ad-hoc requests by Welsh Government/other in order to answer a specific question

Governance

- Data disclosure agreement with four Welsh Police Forces
- Confidentiality Advisory Group application for confidential patient information – provisional approval
- Terms of Reference
- WG chaired Steering group

Currently....

- Review of content and audience for monthly and quarterly outputs being undertaken by Steering Group
- Work with Delivery Unit to refine what “Known to mental health services” means?

Some issues

- Currently restricted to the data that is collected by four police forces that is submitted to the British Transport Police UK surveillance system, some RTSSS data fields are not currently populated
- Resiliency of data collection
- Lack of identifiable information in order to link multiple sources and for linkage with ONS cause of death code

Next steps for RTSSS

- Work with Police and PHW Informatics to improve efficiency and resilience of data collection (e.g. automation) & add ONS data feed
- More real time & more data fields completed
- Explore additional data sources
- Collection of identifiable information to be able to link differences sources
- Update ToR and SOPs as processes evolve
- Work towards final CAG approval – including engaging with bereaved families to discuss the acceptability of use of confidential patient information
- Update of monthly and quarterly surveillance reports
- Planning of first annual surveillance report
- Explore methods of cluster identification

What's in a name?

- RTSSS = Real Time Suspected Suicide System
- Importance of terminology
- Should the SSS stand for "Suspected Suicide Surveillance"?

Thank you
